

57,800 SQ. FT. HIGH IMAGE INDUSTRIAL BUILDING

~~\$165 PSF~~
~~\$135 PSF~~
NOW \$119 PSF



5951 SKYLAB ROAD • HUNTINGTON BEACH, CA

FEATURES:

- Free Standing Industrial Building
- Corner Location
- Dramatic Entry
- ½ Mile to 405 Freeway via Springdale / Westminster Ave
- Master-Planned Business Park
- 7,800 Sq. Ft. of High Image Two-Story Offices
- Fully Sprinklered .45/3000
- 26' Minimum Warehouse Clearance
- Four (4) Dock High Doors
- One (1) Grade Level Door
- 2:1,000 Parking
- 130' Truck Court
- Divisible Building
- Ample Power



For Further Information, Please Contact:

KEVIN M. TURNER
Senior Vice President
Lic. #00968394
(949) 263-5391
kturner@voitco.com

MIKE BOUMA, SIOR
Senior Vice President
Lic. #01070753
(714) 935-2340
mbouma@voitco.com



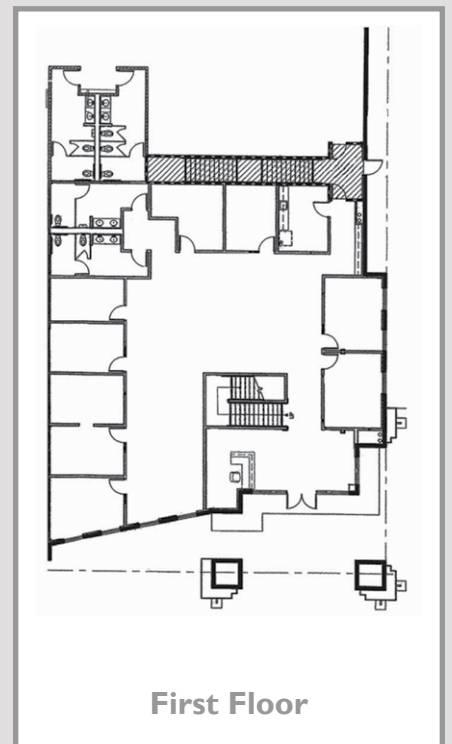
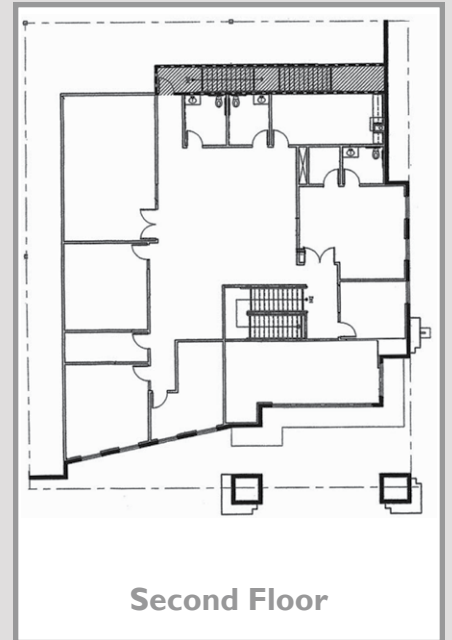
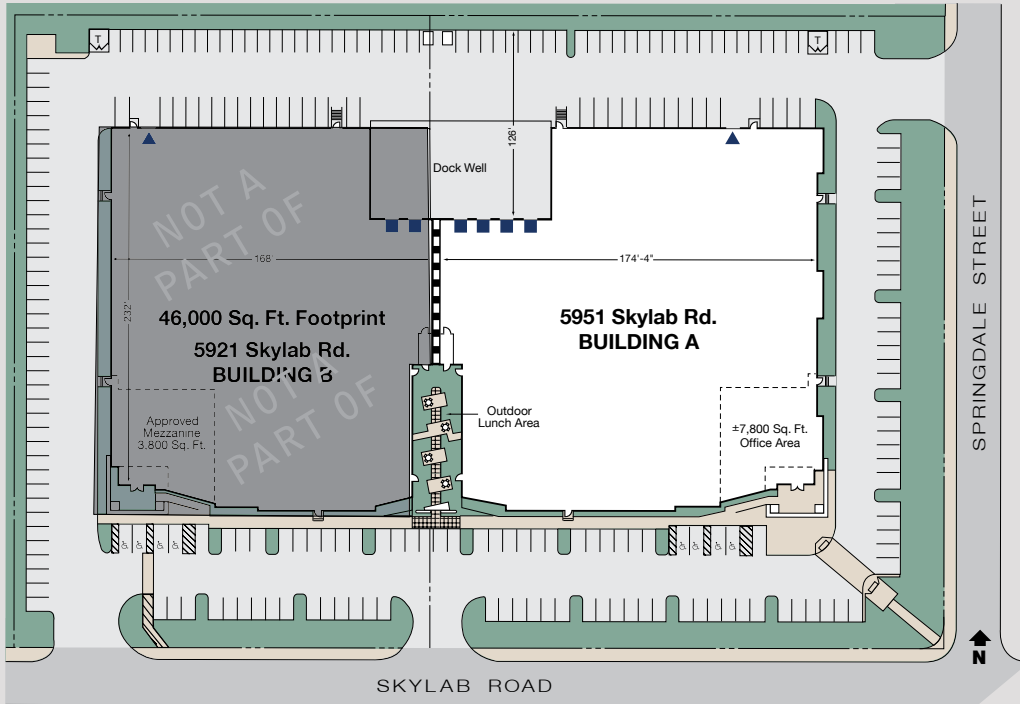
Voit
Real Estate Services

2020 Main Street, Suite 100
Irvine, CA 92614

SKYLAB CORPORATE CENTER



5951 SKYLAB ROAD • HUNTINGTON BEACH, CA



- 9' x 10' Dock High Doors
- ▲ 12' x 14' Grade Level Doors

