

For Sale or Lease

1,350 Sq. Ft.



9311 Research Drive - Irvine Spectrum, CA

FEATURES

- End unit (3 sides of glass line)
- Located within Koll Center 3
- Located in a high visibility location
- Abundant parking
- Direct access to 5 & 405 Fwys via Bake Pkwy
- 100% HVAC



For further information, please contact:

MICHAEL HARTEL
mhartel@voitco.com

KEVIN TURNER
kturner@voitco.com

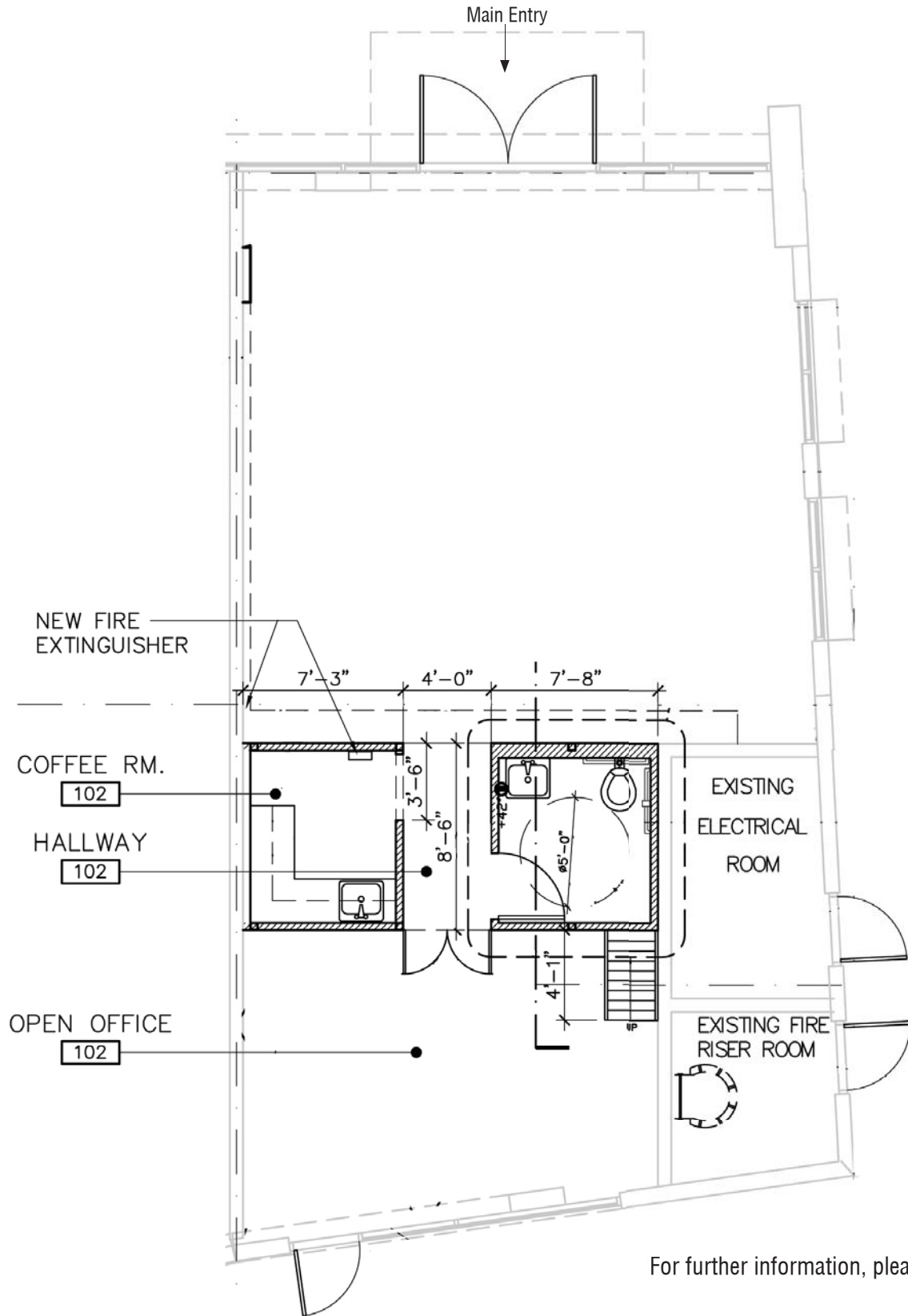
JOE WINKELMANN
jwinkelmanna@voitco.com

TRAVIS HAINING
thaining@voitco.com

949.263.5393

The information contained herein has been obtained from sources we deem reliable. While we have no reason to doubt its accuracy, we do not guarantee it.





For further information, please contact:

MICHAEL HARTEL
mhartel@voitco.com

KEVIN TURNER
kturner@voitco.com

JOE WINKELMANN
jwinkelmann@voitco.com

TRAVIS HAINING
thaining@voitco.com

The information contained herein has been obtained from sources we deem reliable. While we have no reason to doubt its accuracy, we do not guarantee it.

949.263.5393