

FOR LEASE

**2500 Main Street**

Irvine, CA

**Voit**

REAL ESTATE SERVICES

Real People. Real Solutions.™



## Short Term Lease OK

### Features

- **Building SF:** 41,130
- **Office SF:** 3,176
- **Land SF:** 2.06 Acres
- **Building Age:** 1979
- **Clear Height:** ± 24'
- **Parking:** 69 Spaces
- **Loading:** 1 GL / 2 DH
- **Column Spacing:** 20' x 60'
- **Easy 405 Freeway Access via Jamboree Rd.**
- **Excellent Main Street Frontage/Signage**



**Michael J. Hartel**  
Senior Vice President  
Lic #01031013  
949.263.5392  
mhartel@voitco.com

**Kevin M. Turner**  
Senior Vice President  
Lic #00968394  
949.263.5391  
kturner@voitco.com

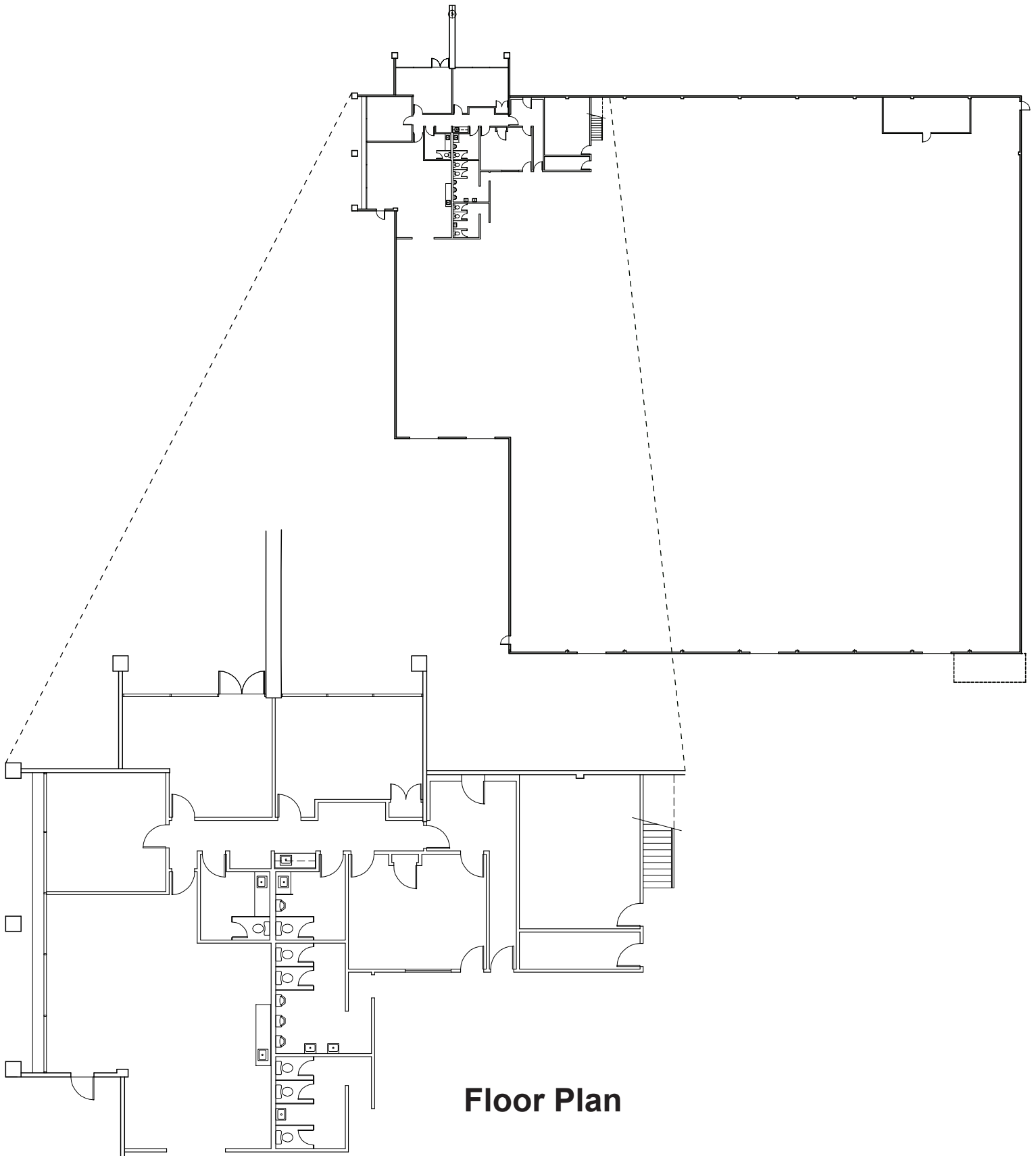
FOR LEASE

**2500 Main Street**  
Irvine, CA

***Voit***

REAL ESTATE SERVICES

Real People. Real Solutions.™



**Floor Plan**

FOR LEASE

2500 Main Street

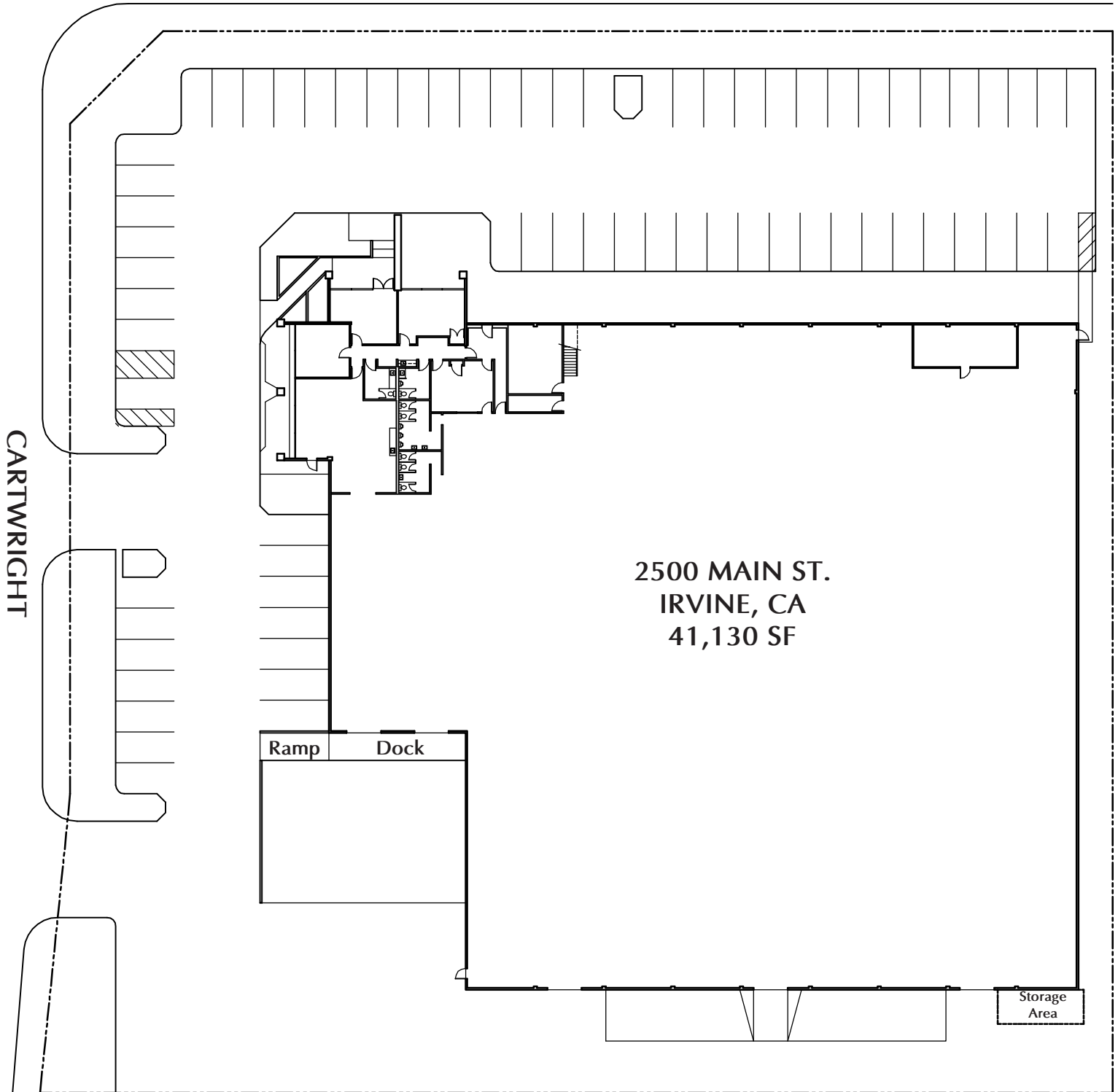
Irvine, CA

**Voit**

REAL ESTATE SERVICES

Real People. Real Solutions.™

MAIN STREET

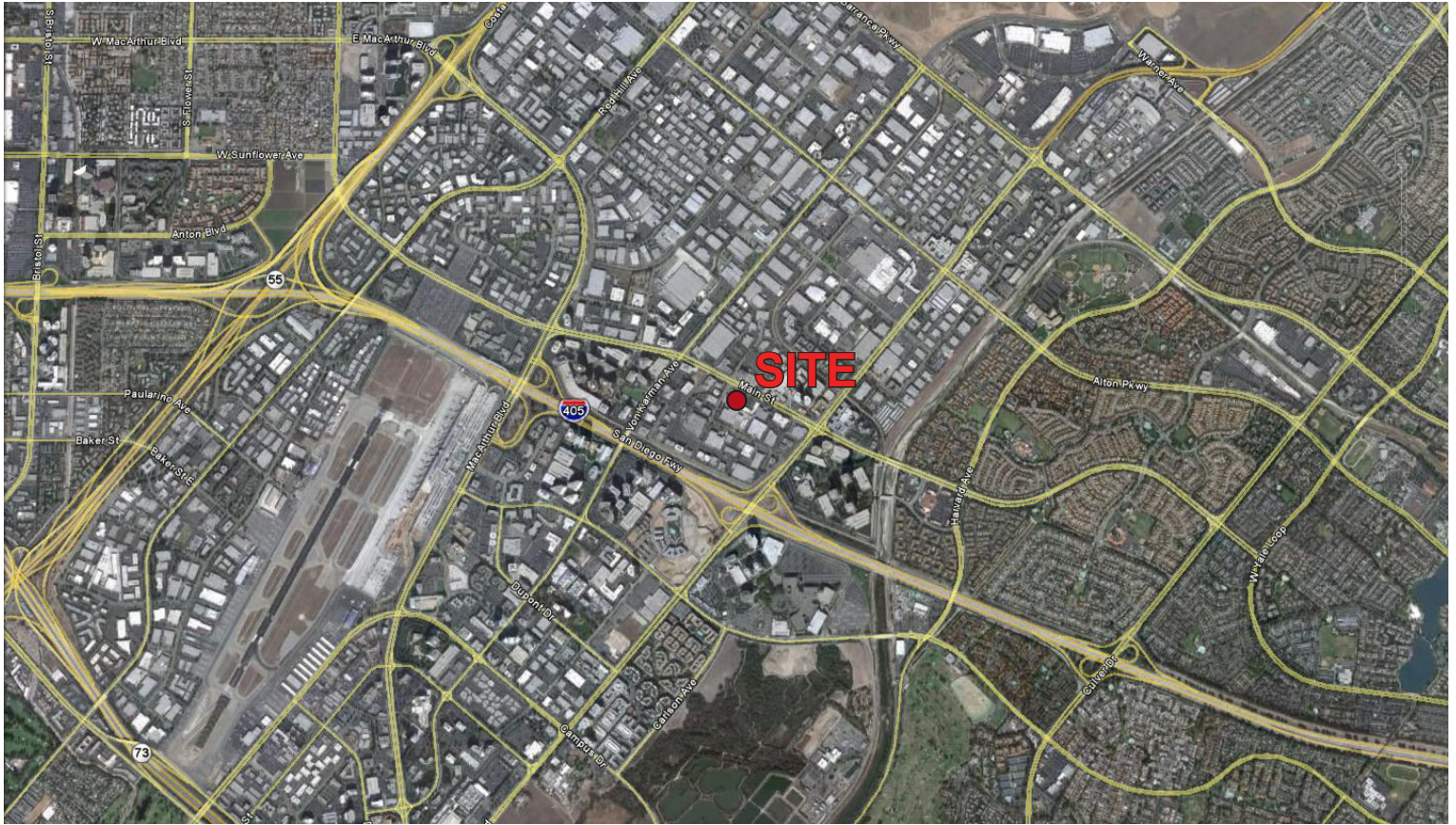


Site Plan

FOR LEASE

# Irvine Business Complex

2500 Main Street, Irvine, CA



**Michael J. Hartel**  
Senior Vice President  
Lic #01031013  
949.263.5392  
mhartel@voitco.com

**Kevin M. Turner**  
Senior Vice President  
Lic #00968394  
949.263.5391  
kturner@voitco.com

**Voit**  
REAL ESTATE SERVICES

2020 Main Street, Suite 100, Irvine, CA 92614 • 949.851.5100 • 949.261.9092 Fax • Lic #01333376 | www.voitco.com

The information contained herein has been obtained from sources we deem reliable. While we have no reason to doubt its accuracy, we do not guarantee it. ©2010 Voit Real Estate Services, Inc. All Rights Reserved. Real People. Real Solutions.™ is a trademark of Voit Real Estate Services.

