

IRVINE TECHNOLOGY CENTER

FREEWAY FRONTAGE OFFICE BUILDING



230 Commerce - Irvine, CA

FEATURES:

- Asking Lease Rate: \$2.05/SF/FSG
- Available Suites:
 - Suite 100: 5,032 SF
 - Suite 110: 2,873 SF
 - Suite 180: 4,256 SF
 - Suite 185: 3,408 SF
 - Suite 190: 4,468 SF
 - Suite 200: 5,158 SF
 - Suite 210: 3,296 SF
 - Suite 250: 7,685 SF
 - Suite 290: 4,635 SF
 - Suites 210, 250: 10,981 SF
 - Suites 250, 290: 12,320 SF
 - Suites 210, 250, 290: 15,616 SF
- Building Signage Available
- Santa Ana (I-5) Freeway Frontage
- Parking: 4:1,000
- Close Proximity to the Tustin Market Place
- Call for Details



For more information contact:

JOE WINKELMANN

Lic. #01259378
949.263.5394 direct
jwinkelman@voitco.com

KEVIN TURNER

Lic. #00968394
949.263.5391 direct
kturner@voitco.com

TRAVIS HAINING

Lic. #01483191
949.263.5393 direct
thaining@voitco.com

MICHAEL HARTEL

Lic. #01031013
949.263.5392 direct
mhartel@voitco.com



IRVINE TECHNOLOGY CENTER



For more information contact:



Voit
Real Estate Services

JOE WINKELMANN

Lic. #01259378
949.263.5394 direct
jwinkelman@voitco.com

TRAVIS HAINING

Lic. #01483191
949.263.5393 direct
thaining@voitco.com

KEVIN TURNER

Lic. #00968394
949.263.5391 direct
kturner@voitco.com

MICHAEL HARTEL

Lic. #01031013
949.263.5392 direct
mhartel@voitco.com

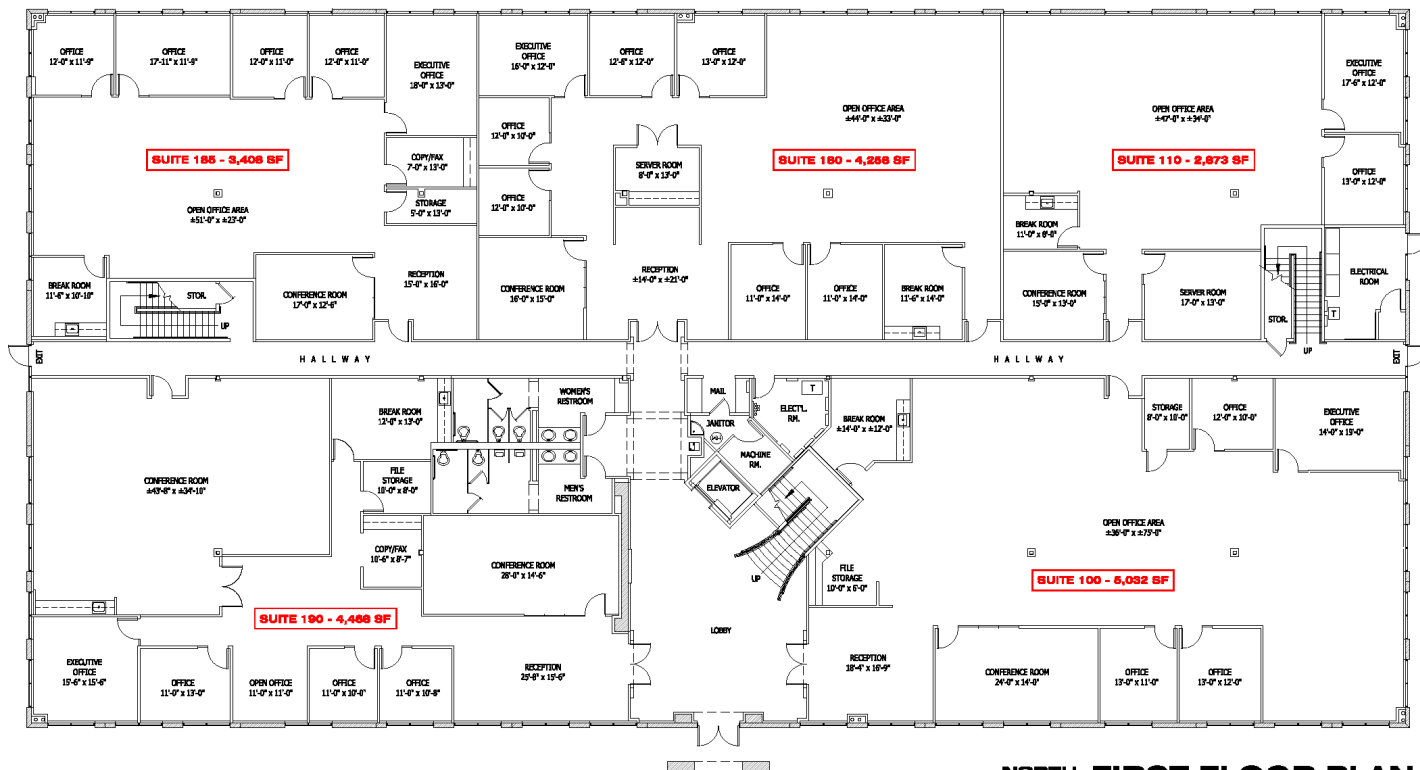
IRVINE TECHNOLOGY CENTER

MARKETING PLAN

IRVINE TECHNOLOGY CENTER
230 COMMERCE, IRVINE, CA 92602

SUITE 100 - 5,032 S.F.
SUITE 110 - 2,873 S.F.
SUITE 185 - 3,408 S.F.
SUITE 180 - 4,256 S.F.
SUITE 190 - 4,468 S.F.

TOTAL RENTABLE AREA: 20,038 S.F.



NORTH FIRST FLOOR PLAN
NOT TO SCALE

JANUARY 07, 2010
Dww
Designworx
Architecture & Land Planning

For more information contact:

JOE WINKELMANN
Lic. #01259378
949.263.5394 direct
jwinkelman@voitco.com

TRAVIS HAINING
Lic. #01483191
949.263.5393 direct
thaining@voitco.com

KEVIN TURNER
Lic. #00968394
949.263.5391 direct
kturner@voitco.com

MICHAEL HARTEL
Lic. #01031013
949.263.5392 direct
mhartel@voitco.com



The information contained herein has been obtained from sources we deem reliable. While we have no reason to doubt its accuracy, we do not guarantee it.

CORFAC
International

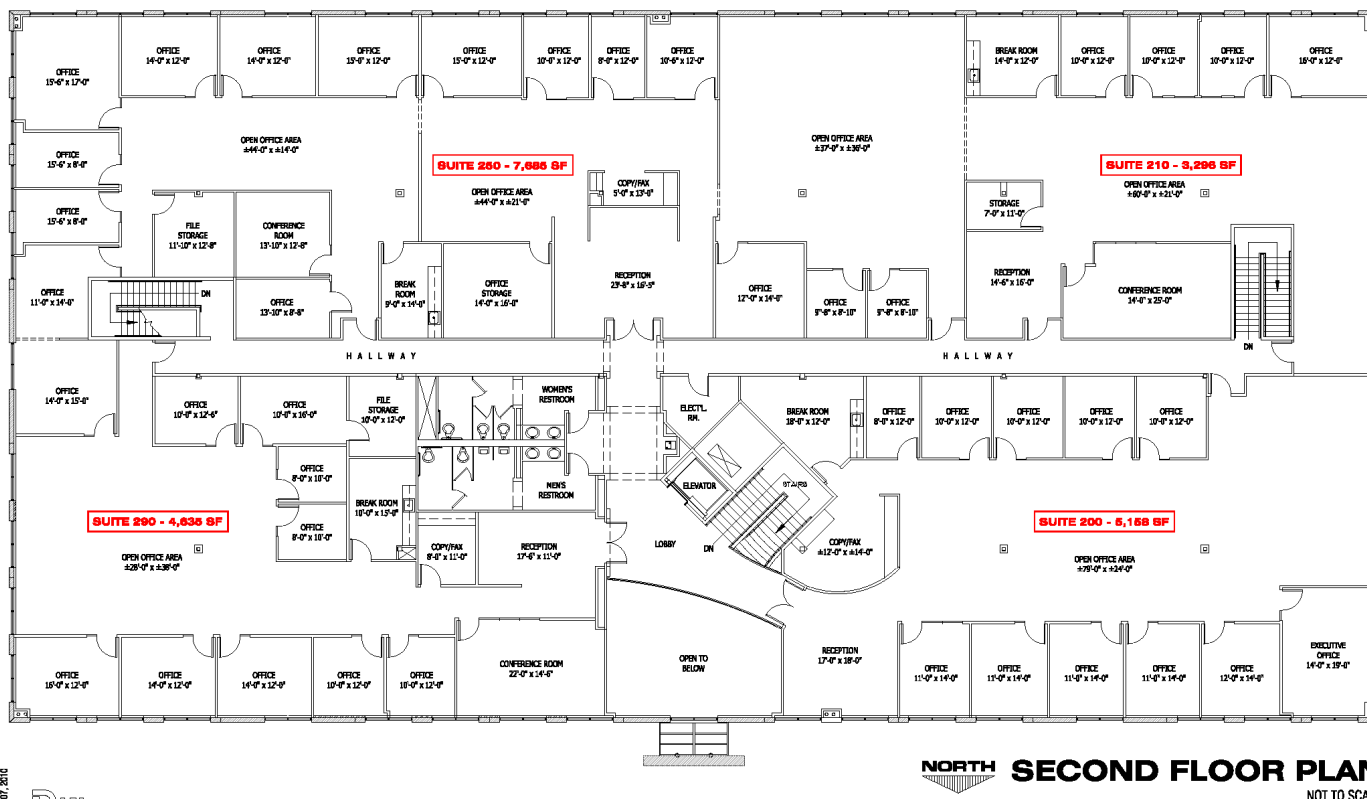
IRVINE TECHNOLOGY CENTER

MARKETING PLAN

IRVINE TECHNOLOGY CENTER
230 COMMERCE, IRVINE, CA 92602

SUITE 200 - 5,158 S.F.
SUITE 210 - 3,296 S.F.
SUITE 250 - 7,685 S.F.
SUITE 290 - 4,635 S.F.

TOTAL RENTABLE AREA: 20,774 S.F.



NORTH SECOND FLOOR PLAN
NOT TO SCALE

JANUARY 07, 2010
Dwx Designworx
Architecture & Land Planning

For more information contact:

JOE WINKELMANN
Lic. #01259378
949.263.5394 direct
jwinkelman@voitco.com

TRAVIS HAINING
Lic. #01483191
949.263.5393 direct
thaining@voitco.com

KEVIN TURNER
Lic. #00968394
949.263.5391 direct
kturner@voitco.com

MICHAEL HARTEL
Lic. #01031013
949.263.5392 direct
mhartel@voitco.com

