

# FOR LEASE

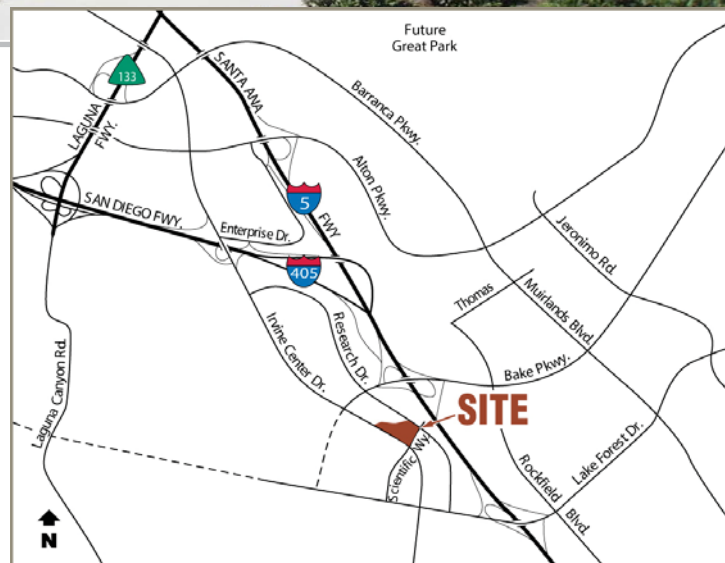
2,603 or 5,206 Square Feet

**\$1 PSF  
Broker Bonus\***



## 16220 SCIENTIFIC WAY - IRVINE, CALIFORNIA

- Two-Story Design Professional Building
  - Corner Unit
- Excellent Frontage on Irvine Center Drive
  - ± 4:1 Parking
  - Two (2) Entrances
  - Above Standard Finishes



\* Broker Bonus: For leases of 3 yrs or longer.  
Leases must be executed prior to November 15, 2007.

**Michael J. Hartel**

949.263.5392

mhartel@voitco.com

**Joe Winkelmann**

949.263.5394

jwinkelmann@voitco.com

**Kevin M. Turner**

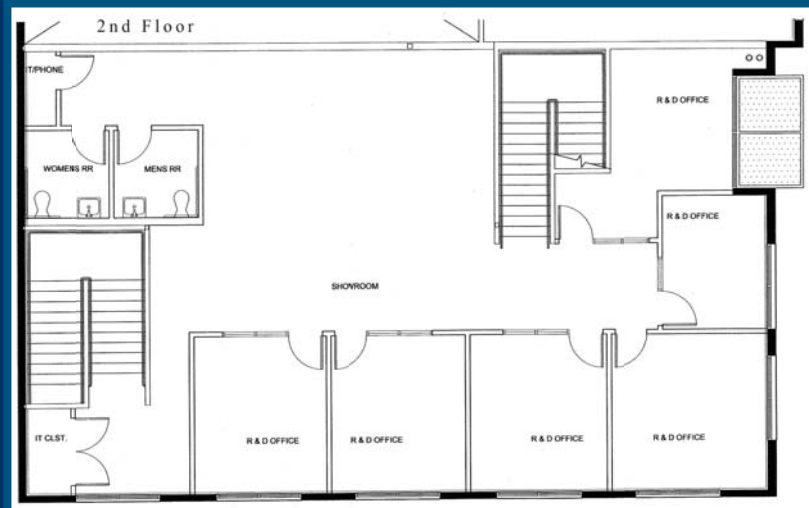
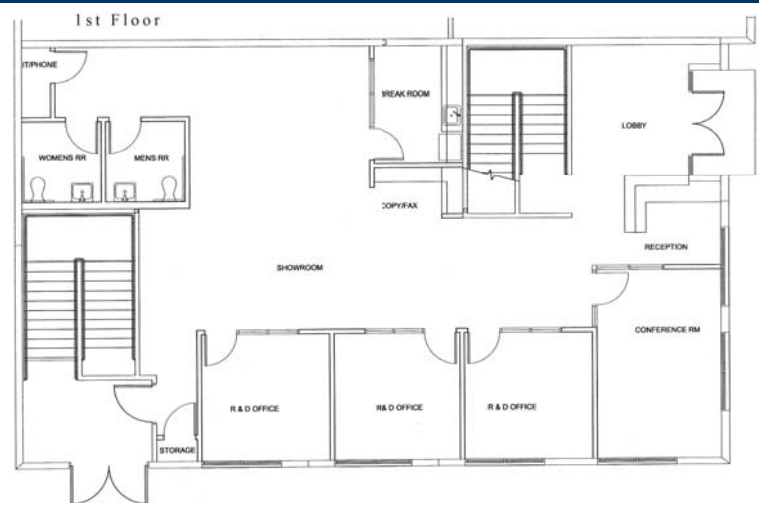
949.263.5391

kturner@voitco.com

**Travis Haining**

949.263.5393

thaining@voitco.com



**Michael J. Hartel**  
949.263.5392  
mhartel@voitco.com

**Joe Winkelmann**  
949.263.5394  
jwinkelmann@voitco.com

**Kevin M. Turner**  
949.263.5391  
kturner@voitco.com

**Travis Haining**  
949.263.5393  
thaining@voitco.com