



at Koll
Center 2



**\$1,000
BONUS***
*Ask for details

4,016 Sq Ft
2,008 SF Office
~~\$1.35 NNN~~

\$0.95

Features

- 1,070 Mezzanine
- Open Office Area
- Signage/Frontage on Scientific Way
- Nets: Approx. \$0.48
- 3 Private Offices
- Kitchen
- 1 GL Door
- 22' Clearance

For Lease

16170 SCIENTIFIC WAY
Irvine Spectrum

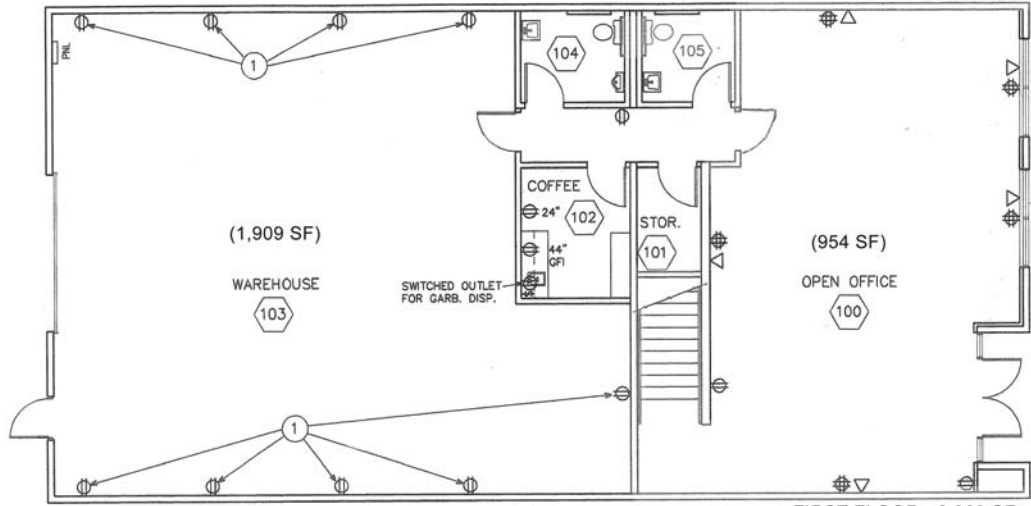


TRAVIS HAINING
Lic. #01483191
(949) 263-5393

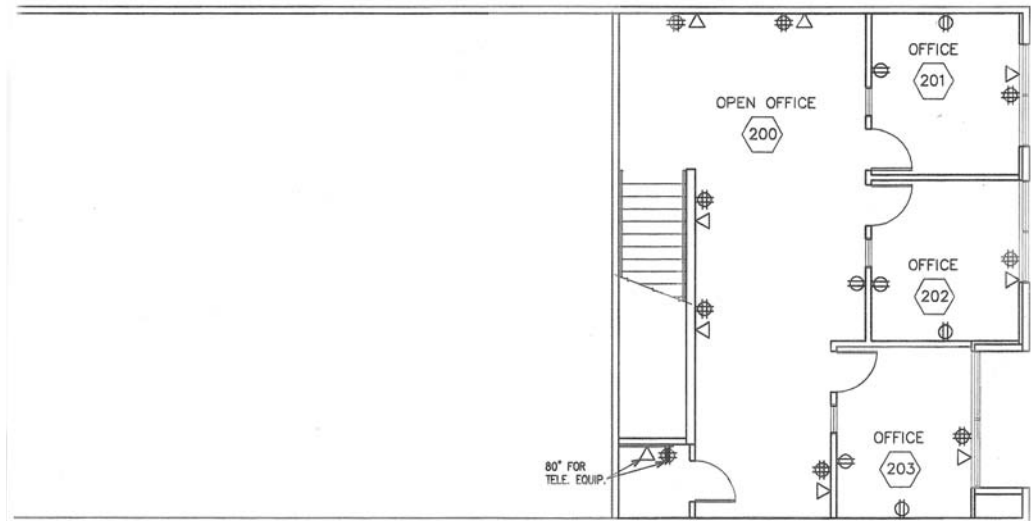
MICHAEL HARTEL
Lic. #01031013
(949) 263-5392

KEVIN TURNER
Lic. #00968394
(949) 263-5391

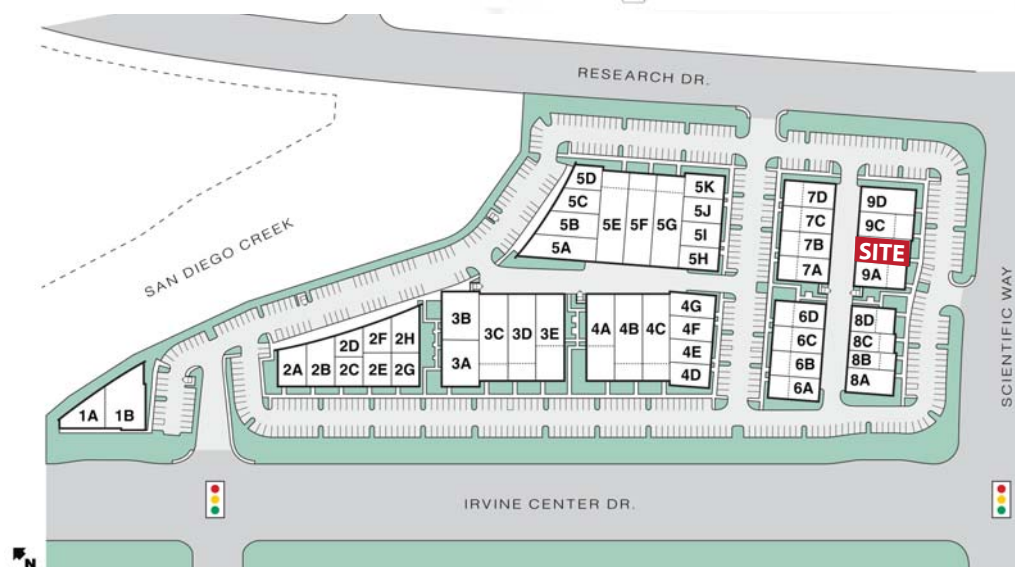
JOE WINKELMANN
Lic. #01259378
(949) 263-5394



FIRST FLOOR - 2,863 SF



Second Floor - 1,153 SF



For further information, contact:

TRAVIS HAINING
Lic. #01483191
(949) 263-5393

MICHAEL HARTEL
Lic. #01031013
(949) 263-5392

KEVIN TURNER
Lic. #00968394
(949) 263-5391

JOE WINKELMANN
Lic. #01259378
(949) 263-5394

The information contained herein has been obtained from sources we deem reliable. While we have no reason to doubt its accuracy, we do not guarantee it.

2020 Main Street, Suite 100, Irvine, California 92614