

MEDICAL OFFICE SPACE FOR LEASE ± 4,317 SF

## Sand Canyon Professional Center

15500 Sand Canyon Avenue, Irvine CA

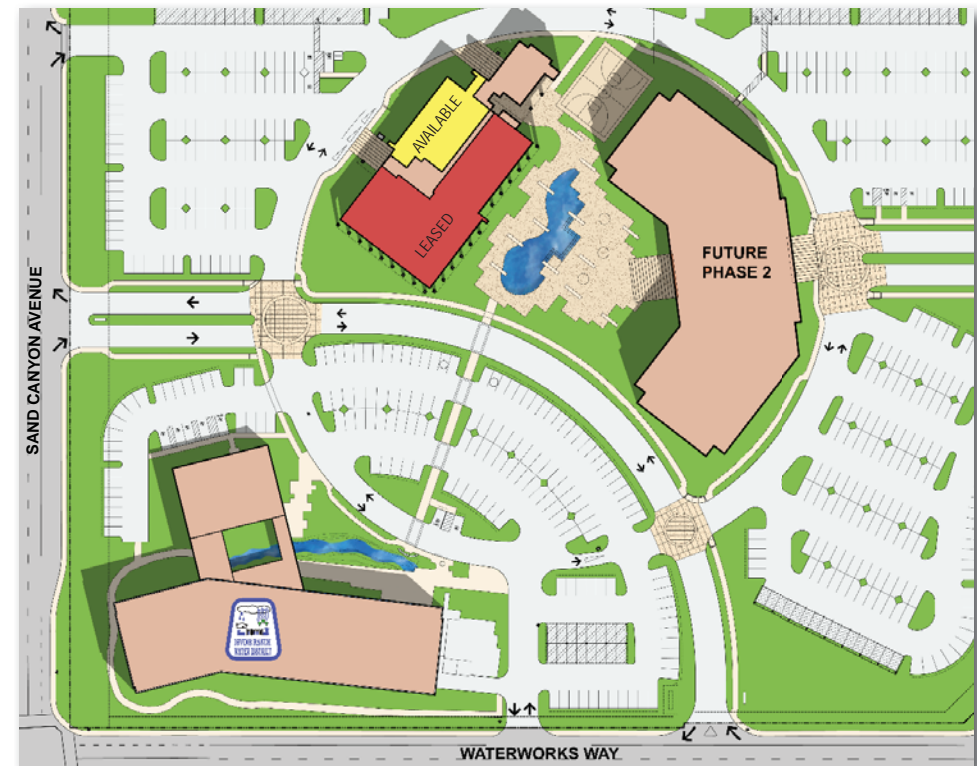
**Voit**  
REAL ESTATE SERVICES

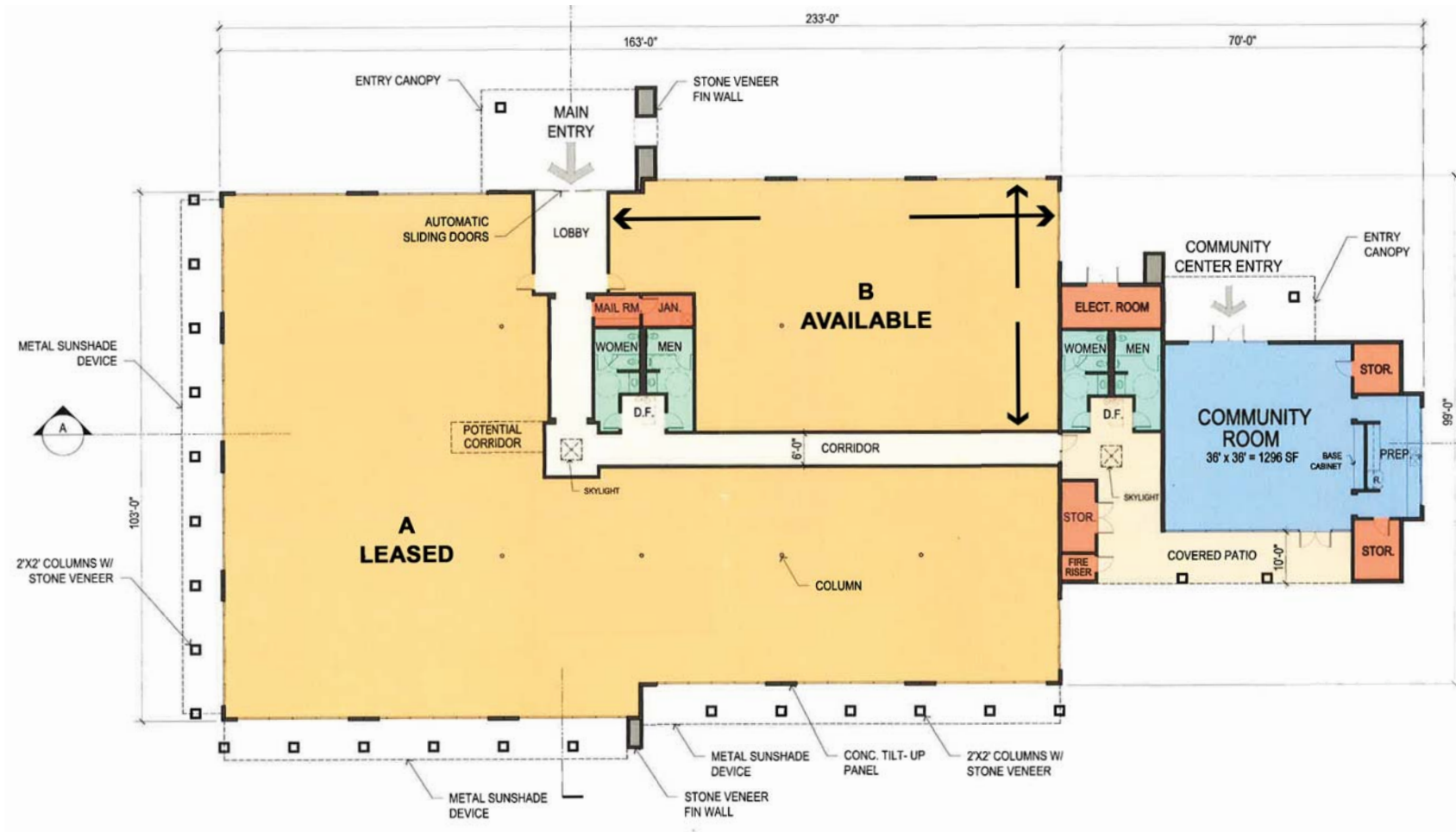
**CONSTRUCTION  
COMPLETE  
SPRING 2012**



### Features

- 4,317 Rentable SF
- Shared Use of 1,296 SF Community Room
- 5:1,000 Parking Ratio
- 12'9" Clear Height
- Sand Canyon Avenue Frontage/Signage
- Easy Access to the I-5 & 405 Freeways
- Conveniently Located 1.1 Miles from Hoag Hospital & Kaiser Permanente Hospital
- Retail Amenities and Restaurants within Walking Distance

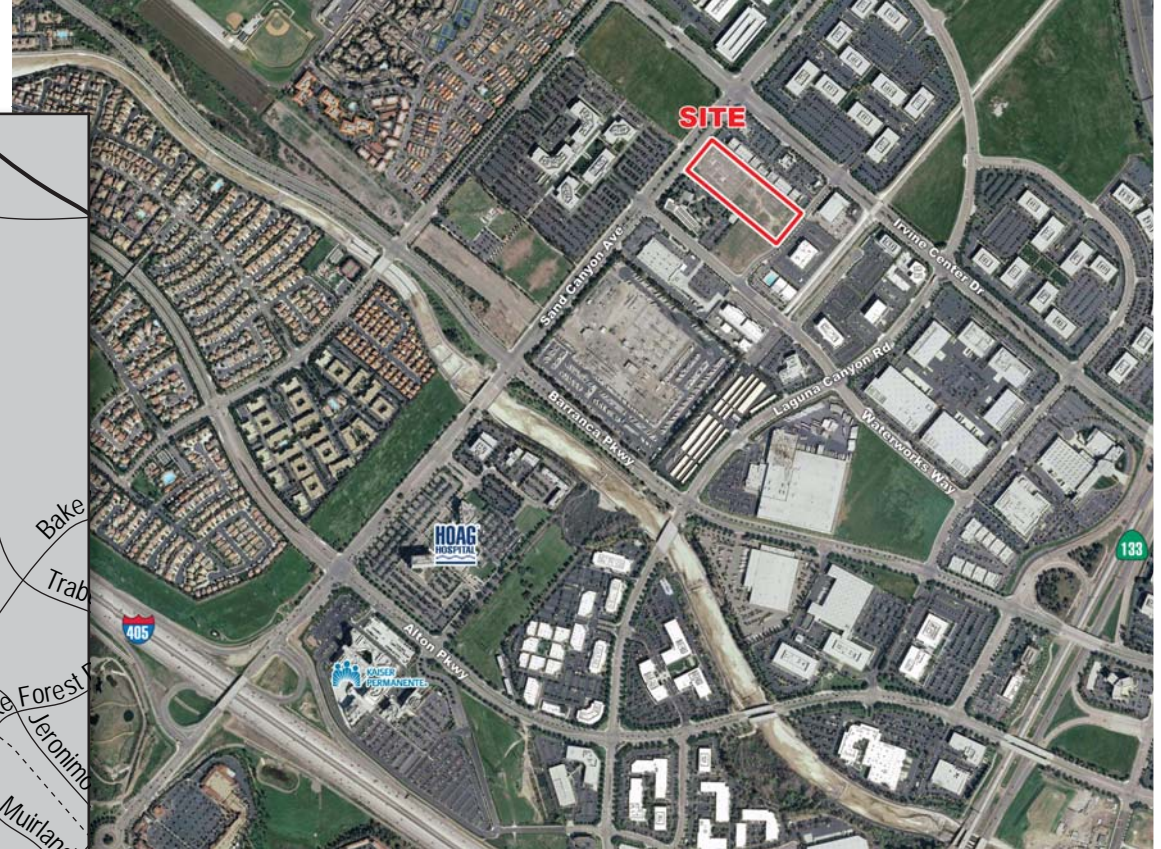
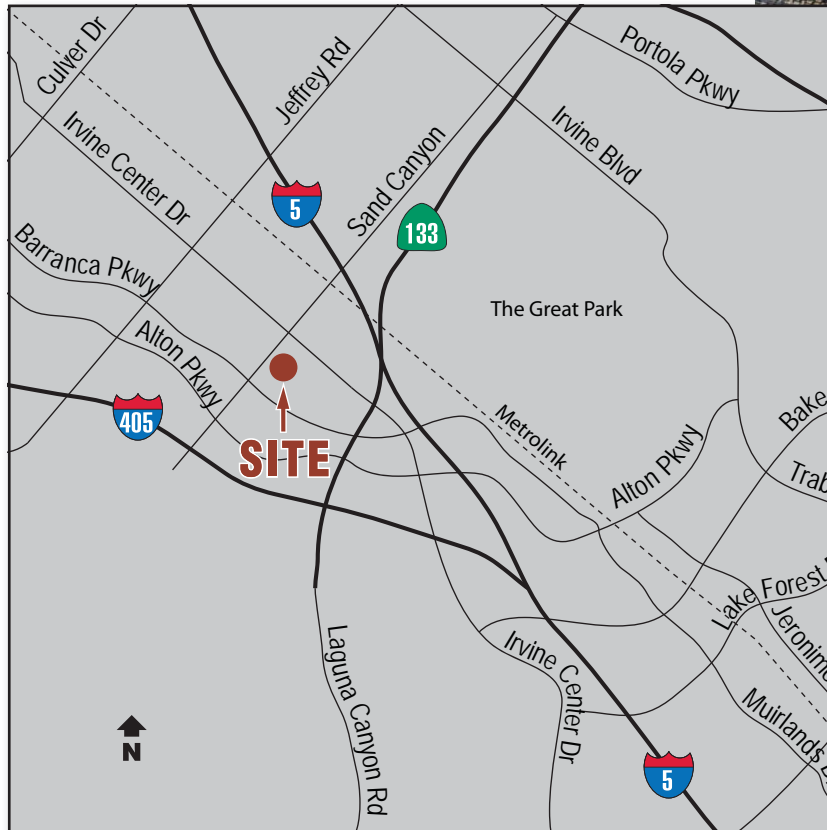




Unit	Square Feet
<b>15500 Sand Canyon Ave., Irvine, CA</b>	
A	12,031 (Leased)
B	4,317

# Sand Canyon Professional Center

15500 Sand Canyon Avenue, Irvine, CA



**Michael Hartel**  
Senior Vice President  
Lic #01031013  
949.263.5392  
mhartel@voitco.com

**Kevin Turner**  
Senior Vice President  
Lic #00968394  
949.263.5391  
kturner@voitco.com

**Voit**  
REAL ESTATE SERVICES

Real People. Real Solutions.®

2020 Main St., Suite 100, Irvine, CA 92614 • 949.851.5100 • 949.261.9092 Fax • Lic #01333376 | www.voitco.com